

TREEGATE latest September/October 2018



Back in March, the Treegate Campaign organised by HWA and the Rail User Group was successful in stopping complete devastation of trees along the railway through Hadley Wood. By June, we had persuaded Network Rail to come to a public meeting to apologise for the extreme devegetation, and to make commitments for the proportionate completion of tree felling works and significant replanting based on Tree Council expertise and consultation with the community. NOW WE MUST HOLD THEM TO THEIR WORD.

During the summer, HWA have worked with Network Rail and Tree Council on implementation. Most important, Network Rail have held to their commitment to resume works only after consultation : which specific trees will be felled, what replanting. As time passed in developing the plans, it became clear that works would only resume in the New Year, but decisions are needed within October to order plants and instruct contractors. We have therefore been able to enjoy a summer with all the preserved trees around the station and on all tunnel portals, and no new disturbance of wildlife alongside the railway through Hadley Wood.

Consultation event. The focus now is to complete the plans ready to present to the community, which Network Rail have agreed to do at **HWA Centre on Wednesday 17 October**. The format will be like a “Public Information Meeting” with display boards. Network Rail managers and Tree Council will be there to explain and hear feedback. This is not a rerun of the Public Meeting but Network Rail have said that their plans are subject to community approval, so this is more than just information.” The date was chosen as the only one all concerned could do, and follows a “Lessons Learned” session during the day organised by Network Rail with Robert Wilson and Francesca Caine asked to attend the project team, contractors and Tree Council. **The Rail User Group have arranged their next meeting with GTR’s timetable team to follow on the same evening starting at 8.00pm.** The Treegate Consultation session has been organised to start at 5.30pm and finish at 8.00pm. We hope this allows the Rail User Group meeting attendees to participate in the Consultation if they can come along earlier and that parents and others will find the earlier start time convenient.

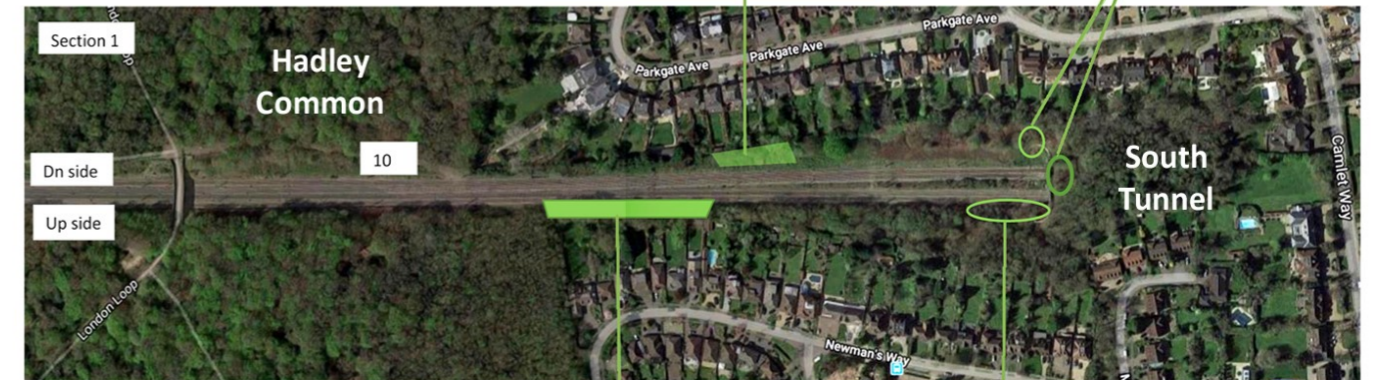
Detailed Plans. We were able to give some indication of likely works in the last July/August edition of HW News. We now have draft plans prepared by the contractors - **see page opposite**. These plans give details in note form, but further explanation can be obtained on 17 October. Robert Wilson and John Leatherdale can also help, and we aim to contact in advance those most concerned - particularly Parkgate and those next to the Station. The plans are not final or complete; preparation and discussion with Network Rail and the Tree Council continues. Two big outstanding issues are the proposed Tree works for the sensitive Conservation Area by the Station, and the promised plans for replanting north of the Station with the “Hadley Wood Trial” (and community involvement in the planting). However, the good news is that we are already seeing the preservation of nearly all trees on tunnel portals, some special replanting by Parkgate and ground preparation of the area for the Station Garden (volunteers still needed to join Rod Armstrong). We are pressing Network Rail to ensure we get a full Trial area and more replanting on other banks. We are also seeking attention to geotechnical conditions (to mitigate flood and slippage risks) and due attention this time to ecological concerns. If you want the best scale of replanting, we shall need our community to show Network Rail on 17 October the strength of our views. They need to be encouraged to give us a full mitigation for the “extreme devegetation”.

Please come to the event and express your opinion. If you cannot come, please share your thoughts with Robert Wilson (robert.wilson.consult@gmail.com) or others of the Treegate team. We shall pass them on.



REPLANTING Network Rail Plans for further vegetation management and replanting including Tree Council trials

Section 1 Newman's/Parkgate



300m² remove existing scrub and bramble, rotavate ground and introduce topsoil, replant with thorne and Goat Willow and mulch.

Several Ash trees showing signs of Ash die back to be removed with several Ash, Sycamore and Oaks to be pollarded.

Several Ash trees showing signs of Ash die back to be section felled during possession and Mature Oak to side prune away from OHLE leaving balanced crown.

Two Oak trees to fell to ground level and remaining trees on embankment to be pollarded to a height of 3.5m.

Section 2 Station



Conservation area to have individual trees marked up by HWM and then agreed by Enfield Council and the Tree Council.

Several Ash and Sycamore to pollard down to a height of approximately 1.5m.

Ash with fungal infection to be section felled.

Area to be marked out and replanted to Tree Councils specification with the area being divided up into six sections. Ground to be prepared and re-planted with appropriate species and mulched.

Sycamore tree to be pollarded to 4m and ivy to be severed at base of tree.

Area to be cleared of scrub for residents to re-plant.

Re-gen of Ash and Sycamore to coppiced leaving Privet and Thorne present on site.

Section 3 Beyond Waggon Road



Several White Polar trees to be coppiced and several White Poplars to be pollarded.



De-vegging in progress March 2018